

Supplementary Data

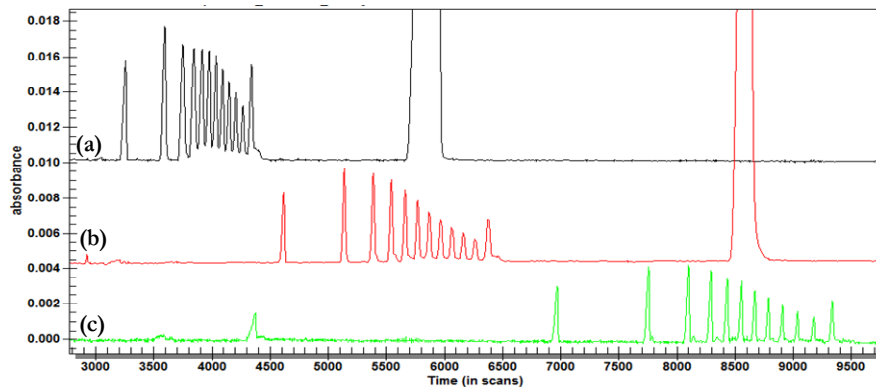


Figure 1: GST processed electropherograms of the 25bp ladder (36 $\mu\text{g/ml}$ in deionised water, Promega). (a) Separation performed on a 34 cm long capillary of effective length 20cm black trace, (b) Separations performed on a 44 cm long capillary of effective length 30cm red trace. (c) Separations performed on a 54cm long capillary of effective length 40 cm. All separations were performed using the 4% PEO (300kDa) sieving buffer, at 25°C and using an electric field strength of 330 V/cm. In both cases the capillary was pre-coated with 10% PVP. One scan is one tenth of a second.

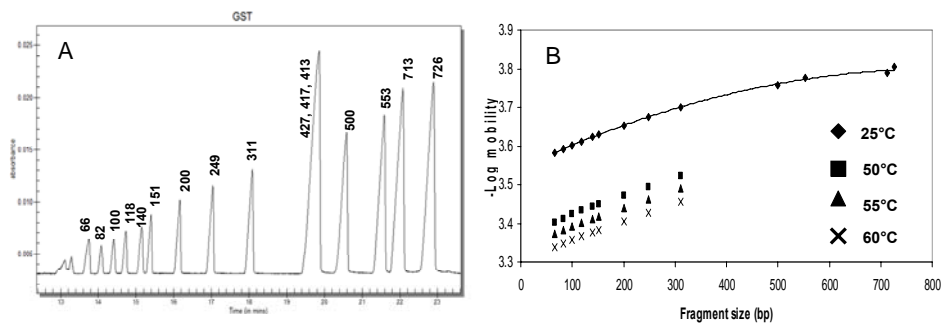


Figure 2: Separation of $\Phi\text{X174}/\text{HinfI}$ digest (500 $\text{ng}/\mu\text{l}$ in deionised water, Invitrogen). A) GST processed electropherogram of separation performed at 25°C. B) Minus Log of mobility versus fragment size (bp) at 25, 50, 55 and 60°C.